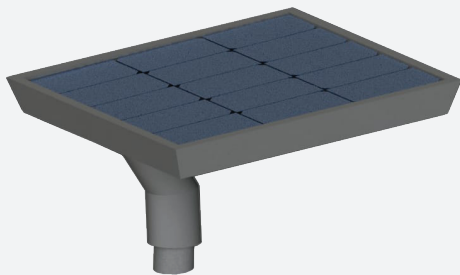




SOLAR LIGHT

2024

 **SOHO**
Lighting Design



55127

55127 is a self-sufficient, maintenance-free solar light for outdoor lighting applications.



Light Source
high-efficiency power LEDs



LED Life Span
>75.000 Hours



Maximum LED Power
10 Watt



Maximum Luminous Flux
1.800 Lumen



Solar Module
28 Watt



Battery
LiFePo4 / 115,2 Wh



Power Control Unit
MPPT



Luminare Mast Height
3 - 4 mt

3 YEAR WARRANTY

CE EN 55015
EN 61547
EN 60598-2-1



Technology



Sustainability



Cost Saving



IP 66



Environment

LED LIGHT

Illuminant	High-efficiency power LEDs
Light Output Power (Watt)	10 Watt / 5 Watt (standby)
Lumen	1.800 lm (Boost Mode) / 900 lm (normal operation - dimmable)
Optics	T3 (standard) 135° x 75°, T2-T4-T5 (optional)
LED - Light Temperature	4.000 Kelvin, CRI > 70 (standard) 4.500 Kelvin - 6.500 Kelvin (optional)
LED Life Span	>75.000 hours
Optics Protection Class	IP 67

SOLAR MODULE

Cell Technology	5/9 Busbar Mono PERC (n type monocrystalline back contact optional)
Power	28 Watt
Cell Efficiency	22,9%

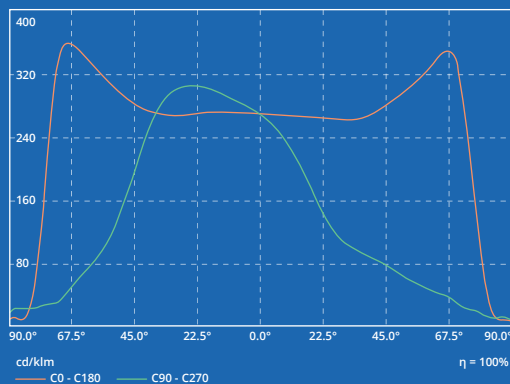
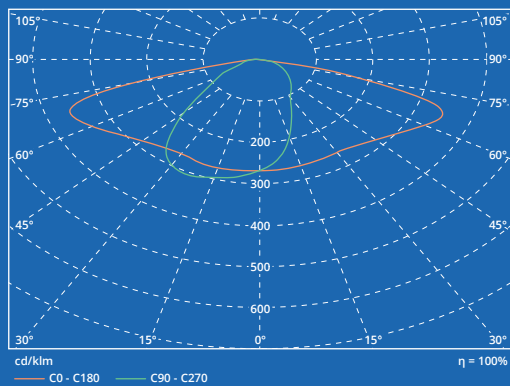
MPPT POWER CONTROL

Dynamic Light Profile	Standard operating mode is - Sensor mode - Unit operates at 900 lm until movement is detected then increases illumination up to 100% (1.800 lm) until 20 seconds after movement is no longer detected. <i>Note: configurable TIMER settings for ON / OFF / DIM are available upon request.</i>
-----------------------	---

BATTERY

Battery Type / Capacity	LiFePo4 / 115,2 Wh (replaceable capacity)
Battery Life Span	3.000 cycle at 25°C

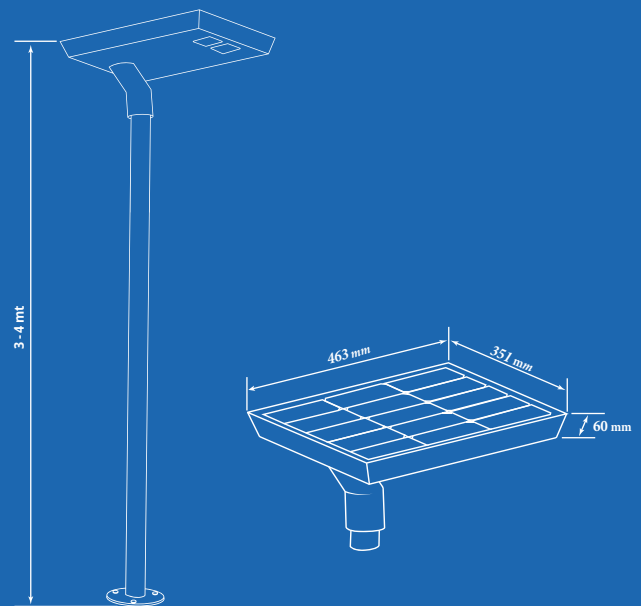
LIGHT DISTRIBUTION CURVE

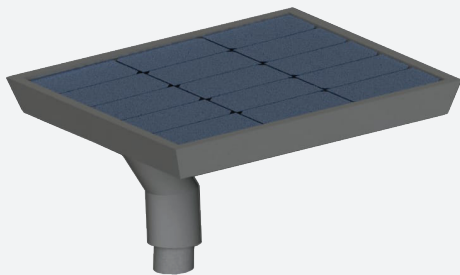


MAIN BODY

Material: Electrostatic powder coated carbon steel

Dimension (Width x Length x Height): 351 x 463 x 160 (with Pole adaptor)





55128

55128 is a self-sufficient, maintenance-free solar light for outdoor lighting applications.



Light Source
high-efficiency power LEDs



LED Life Span
>75.000 Hours



Maximum LED Power
18 Watt



Maximum Luminous Flux
3.600 Lumen



Solar Module
50 Watt



Battery
LiFePo4 / 230,4 Wh



Power Control Unit
MPPT



Luminare Mast Height
4 - 5 mt

3 YEAR WARRANTY

CE EN 55015
EN 61547
EN 60598-2-1



Technology



Sustainability



Cost Saving



IP 66



Environment

LED LIGHT

Illuminant	High-efficiency power LEDs
Light Output Power (Watt)	18 Watt / 9 Watt (standby)
Lumen	3.600 lm (Boost Mode) / 1.800 lm (normal operation - dimmable)
Optics	T3 (standard) 135° x 75°, T2-T4-T5 (optional)
LED - Light Temperature	4.000 Kelvin, CRI > 70 (standard) 4.500 Kelvin - 6.500 Kelvin (optional)
LED Life Span	>75.000 hours
Optics Protection Class	IP 67

SOLAR MODULE

Cell Technology	5/9 Busbar Mono PERC (n type monocrystalline back contact optional)
Power	50 Watt
Cell Efficiency	22,9%

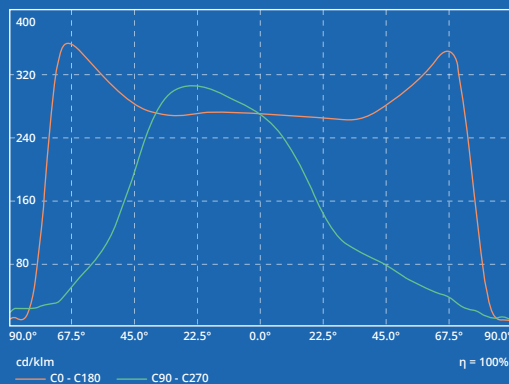
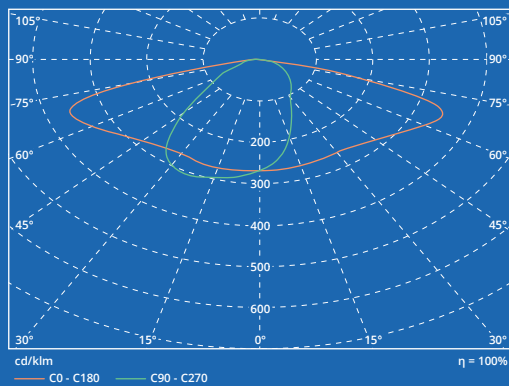
MPPT POWER CONTROL

Dynamic Light Profile	Standard operating mode is - Sensor mode - Unit operates at 1,800 lm until movement is detected then increases illumination up to 100% (3,600 lm) until 20 seconds after movement is no longer detected. <i>Note: configurable TIMER settings for ON / OFF / DIM are available upon request.</i>
-----------------------	---

BATTERY

Battery Type / Capacity	LiFePo4 / 230,4 Wh (replaceable capacity)
Battery Life Span	3.000 cycle at 25°C

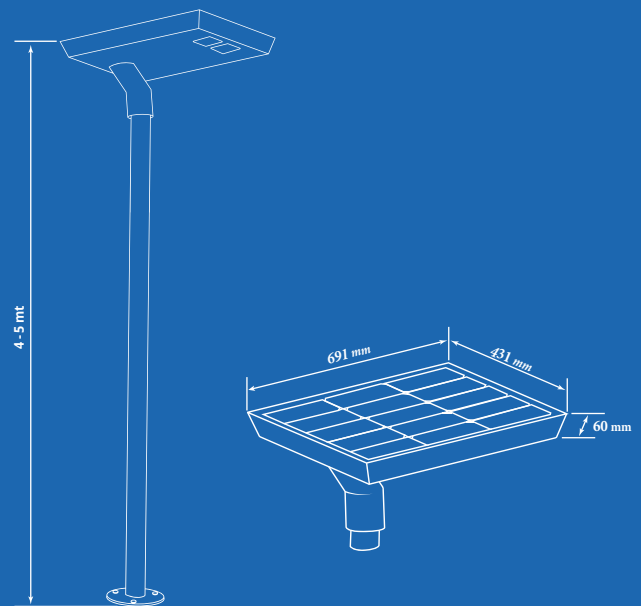
LIGHT DISTRIBUTION CURVE

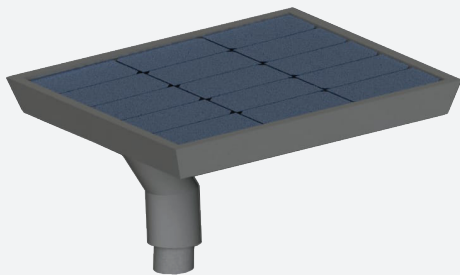


MAIN BODY

Material: Electrostatic powder coated carbon steel

Dimension (Width x Length x Height): 431 x 691 x 160 (with Pole adaptor)





55129

55129 is a self-sufficient, maintenance-free solar light for outdoor lighting applications.



Light Source
high-efficiency power LEDs



LED Life Span
>75.000 Hours



Maximum LED Power
28 Watt



Maximum Luminous Flux
5.400 Lumen



Solar Module
59 Watt



Battery
LiFePo4 / 307,2 Wh



Power Control Unit
MPPT



Luminare Mast Height
5 - 6 mt

3 YEAR WARRANTY

CE EN 55015
EN 61547
EN 60598-2-1



Technology



Sustainability



Cost Saving



IP 66



Environment

LED LIGHT

Illuminant	High-efficiency power LEDs
Light Output Power (Watt)	28 Watt / 14 Watt (standby)
Lumen	5.400 lm (Boost Mode) / 2.700 lm (normal operation - dimmable)
Optics	T3 (standard) 135° x 75°, T2-T4-T5 (optional)
LED - Light Temperature	4.000 Kelvin, CRI > 70 (standard) 4.500 Kelvin - 6.500 Kelvin (optional)
LED Life Span	>75.000 hours
Optics Protection Class	IP 67

SOLAR MODULE

Cell Technology	5/9 Busbar Mono PERC (n type monocrystalline back contact optional)
Power	59 Watt
Cell Efficiency	22,9%

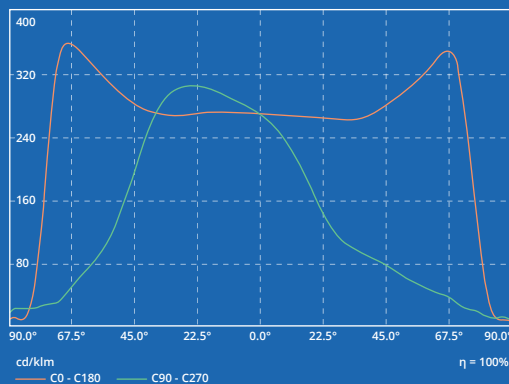
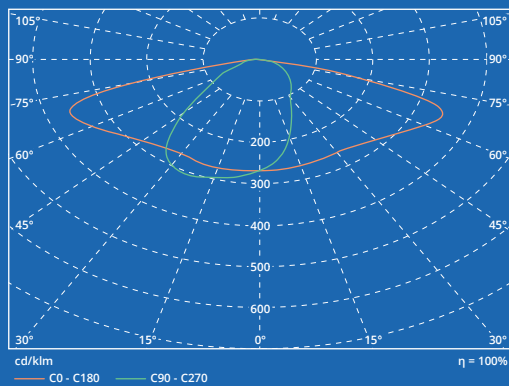
MPPT POWER CONTROL

Dynamic Light Profile	Standard operating mode is - Sensor mode - Unit operates at 2.700 lm until movement is detected then increases illumination up to 100% (5.400 lm) until 20 seconds after movement is no longer detected. <i>Note: configurable TIMER settings for ON / OFF / DIM are available upon request.</i>
-----------------------	---

BATTERY

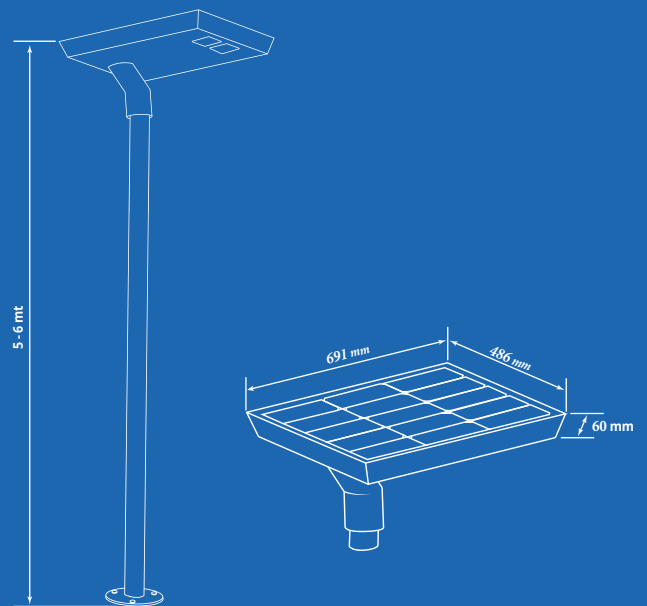
Battery Type / Capacity	LiFePo4 / 307,2 Wh (replaceable capacity)
Battery Life Span	3.000 cycle at 25°C

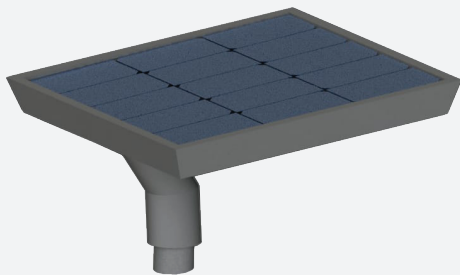
LIGHT DISTRIBUTION CURVE



MAIN BODY

Material: Electrostatic powder coated carbon steel
Dimension (Width x Length x Height): 486x 691 x 160 (with Pole adaptor)





55130

55130 is a self-sufficient, maintenance-free solar light for outdoor lighting applications.



Light Source
high-efficiency power LEDs



LED Life Span
>75.000 Hours



Maximum LED Power
38 Watt



Maximum Luminous Flux
7.200 Lumen



Solar Module
73 Watt



Battery
LiFePo4 / 384 Wh



Power Control Unit
MPPT



Luminare Mast Height
6 - 7 mt

3 YEAR WARRANTY

CE EN 55015
EN 61547
EN 60598-2-1



Technology



Sustainability



Cost Saving



IP 66



Environment

LED LIGHT

Illuminant	High-efficiency power LEDs
Light Output Power (Watt)	38 Watt / 19 Watt (standby)
Lumen	7.200 lm (Boost Mode) / 3.600 lm (normal operation - dimmable)
Optics	T3 (standard) 135° x 75°; T2-T4-T5 (optional)
LED - Light Temperature	4.000 Kelvin, CRI > 70 (standard) 4.500 Kelvin - 6.500 Kelvin (optional)
LED Life Span	>75.000 hours
Optics Protection Class	IP 67

SOLAR MODULE

Cell Technology	5/9 Busbar Mono PERC (n type monocrystalline back contact optional)
Power	73 Watt
Cell Efficiency	22,9%

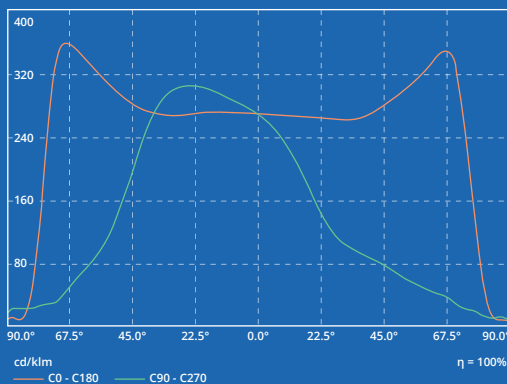
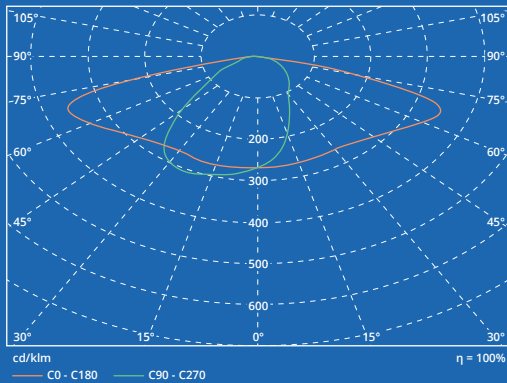
MPPT POWER CONTROL

Dynamic Light Profile	Standard operating mode is - Sensor mode - Unit operates at 3.600 lm until movement is detected then increases illumination up to 100% (7.200 lm) until 20 seconds after movement is no longer detected. <i>Note: configurable TIMER settings for ON / OFF / DIM are available upon request.</i>
-----------------------	---

BATTERY

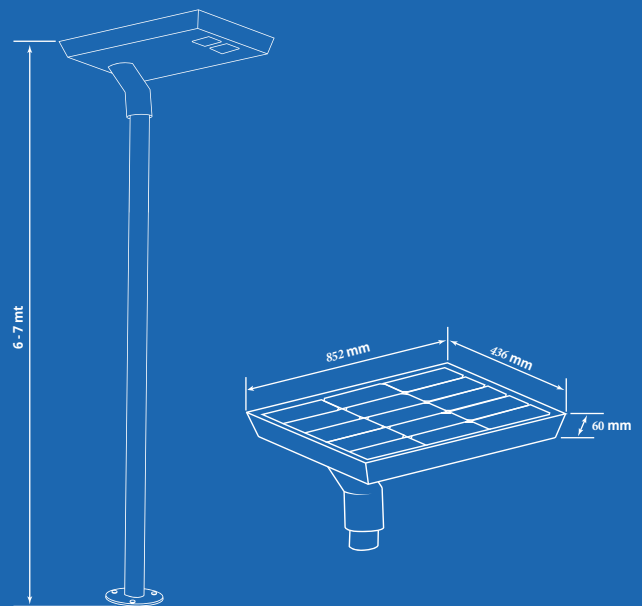
Battery Type / Capacity	LiFePo4 / 384 Wh (replaceable capacity)
Battery Life Span	3.000 cycle at 25°C

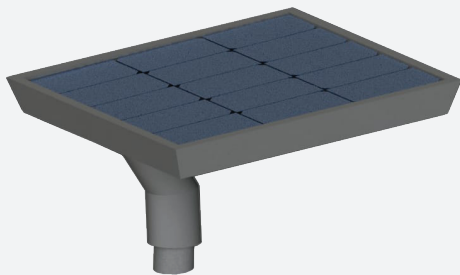
LIGHT DISTRIBUTION CURVE



MAIN BODY

Material: Electrostatic powder coated carbon steel
Dimension (Width x Length x Height): 436x852x160 mm (with Pole adaptor)





55131

55131 is a self-sufficient, maintenance-free solar light for outdoor lighting applications.



Light Source
high-efficiency power LEDs



LED Life Span
>75.000 Hours



Maximum LED Power
48 Watt



Maximum Luminous Flux
9.000 Lumen



Solar Module
83 Watt



Battery
LiFePo4 / 460,8 Wh



Power Control Unit
MPPT



Luminare Mast Height
7 - 8 mt

3 YEAR WARRANTY

CE EN 55015
EN 61547
EN 60598-2-1



Technology



Sustainability



Cost Saving



IP 66



Environment

LED LIGHT

Illuminant	High-efficiency power LEDs
Light Output Power (Watt)	48 Watt / 24 Watt (standby)
Lumen	9.000 lm (Boost Mode) / 4.500 lm (normal operation - dimmable)
Optics	T3 (standard) 135° x 75°, T2-T4-T5 (optional)
LED - Light Temperature	4.000 Kelvin, CRI > 70 (standard) 4.500 Kelvin - 6.500 Kelvin (optional)
LED Life Span	>75.000 hours
Optics Protection Class	IP 67

SOLAR MODULE

Cell Technology	5/9 Busbar Mono PERC (n type monocrystalline back contact optional)
Power	83 Watt
Cell Efficiency	22,9%

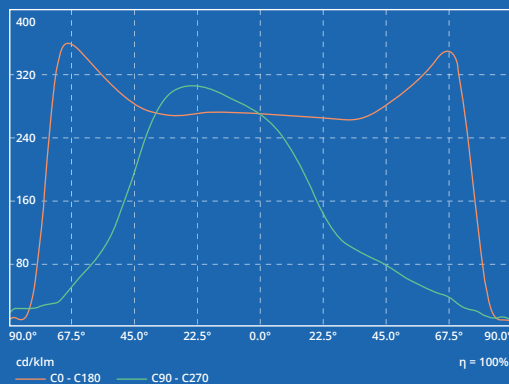
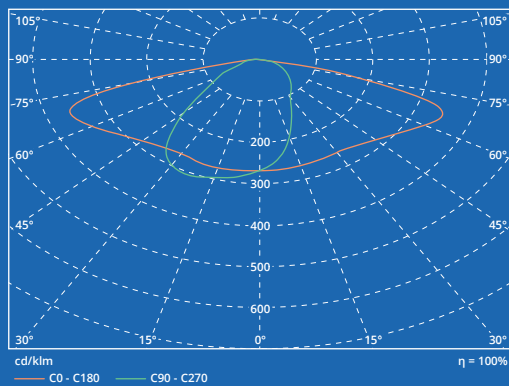
MPPT POWER CONTROL

Dynamic Light Profile	Standard operating mode is - Sensor mode - Unit operates at 4.500 lm until movement is detected then increases illumination up to 100% (9.000 lm) until 20 seconds after movement is no longer detected. <i>Note: configurable TIMER settings for ON / OFF / DIM are available upon request.</i>
-----------------------	---

BATTERY

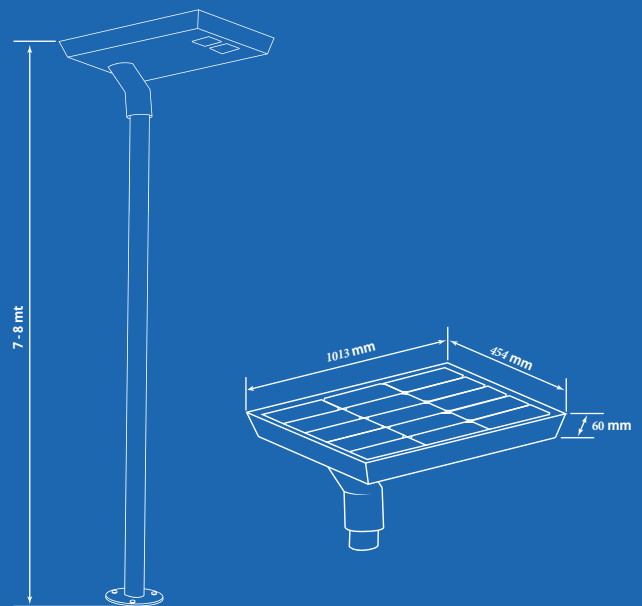
Battery Type / Capacity	LiFePo4 / 460,8 Wh (replaceable capacity)
Battery Life Span	3.000 cycle at 25°C

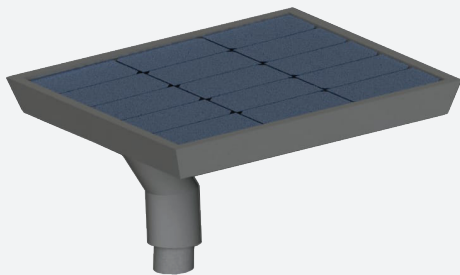
LIGHT DISTRIBUTION CURVE



MAIN BODY

Material: Electrostatic powder coated carbon steel
Dimension (Width x Length x Height): 454x1013x160 mm (with Pole adaptor)





55132

55132 is a self-sufficient, maintenance-free solar light for outdoor lighting applications.



Light Source
high-efficiency power LEDs



LED Life Span
>75.000 Hours



Maximum LED Power
59 Watt



Maximum Luminous Flux
10.800 Lumen



Solar Module
83 Watt



Battery
LiFePo4 / 460,8 Wh



Power Control Unit
MPPT



Luminare Mast Height
8 - 9 mt

3 YEAR WARRANTY

CE EN 55015
EN 61547
EN 60598-2-1



Technology



Sustainability



Cost Saving



IP 66



Environment

LED LIGHT

Illuminant	High-efficiency power LEDs
Light Output Power (Watt)	59 Watt / 29 Watt (standby)
Lumen	10.800 lm (Boost Mode) / 5.400 lm (normal operation - dimmable)
Optics	T3 (standard) 135° x 75°; T2-T4-T5 (optional)
LED - Light Temperature	4.000 Kelvin, CRI > 70 (standard) 4.500 Kelvin - 6.500 Kelvin (optional)
LED Life Span	>75.000 hours
Optics Protection Class	IP 67

SOLAR MODULE

Cell Technology	5/9 Busbar Mono PERC (n type monocrystalline back contact optional)
Power	83 Watt
Cell Efficiency	22,9%

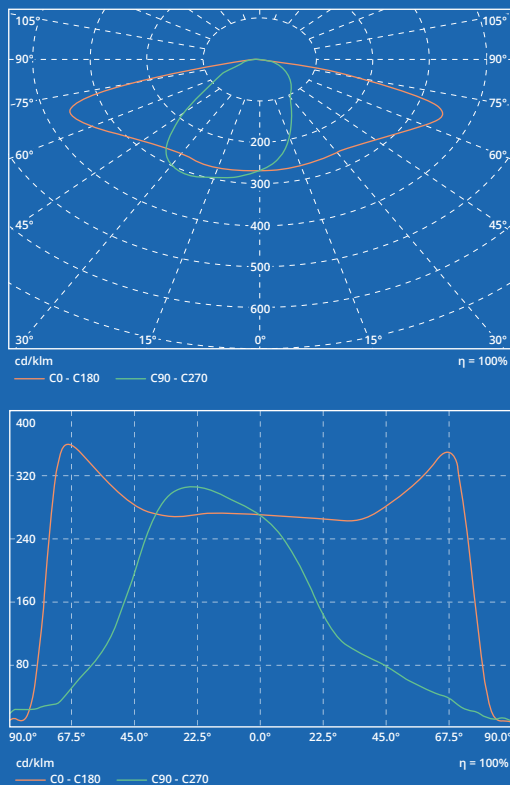
MPPT POWER CONTROL

Dynamic Light Profile	Standard operating mode is - Sensor mode - Unit operates at 5.400 lm until movement is detected then increases illumination up to 100% (10.800 lm) until 20 seconds after movement is no longer detected. <i>Note: configurable TIMER settings for ON / OFF / DIM are available upon request.</i>
-----------------------	--

BATTERY

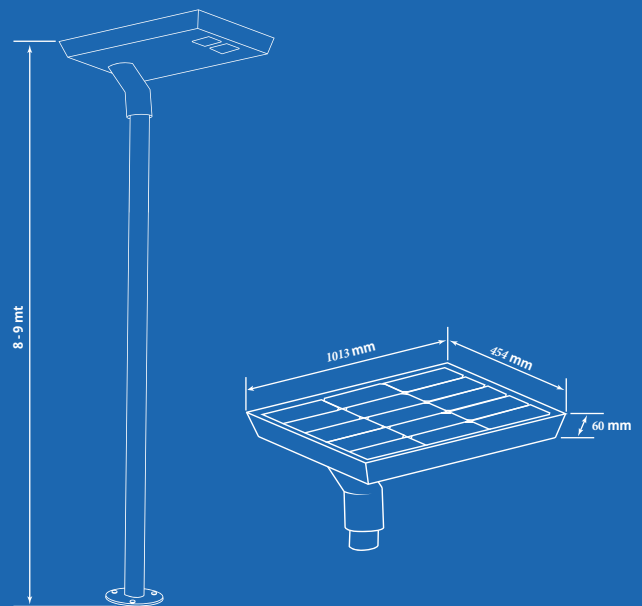
Battery Type / Capacity	LiFePo4 / 460,8 Wh (replaceable capacity)
Battery Life Span	3.000 cycle at 25°C

LIGHT DISTRIBUTION CURVE



MAIN BODY

Material: Electrostatic powder coated carbon steel
Dimension (Width x Length x Height): 454x1013x160 mm (with Pole adaptor)





SOHO

Light Design

İSTANBUL MERKEZ OFİS:
Ferhatpaşa Mahallesi Üsküdar Caddesi Coşkun İş Merkezi
No:42/5 Ataşehir/İSTANBUL
Küçükyalı V.D : 7720633902
Tel : +90 216 576 69 41 FAX:
Fax: +90 216 576 69 42
info@soholight.com